

DIVA Crown

La Cage Cervicale Bloquée
The Blocked Cervical Cage

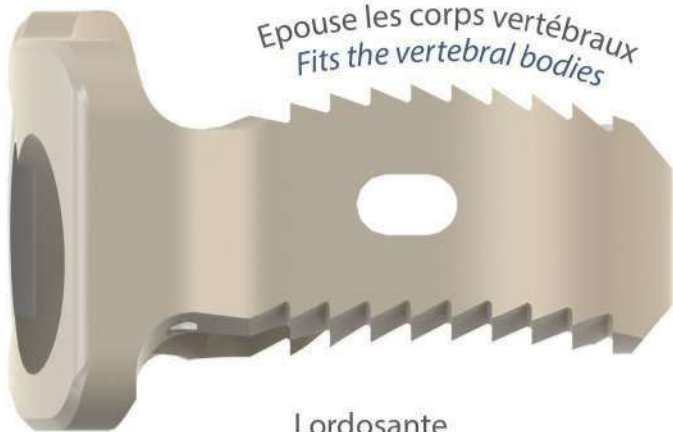


NovaSpine

IMPLANTS

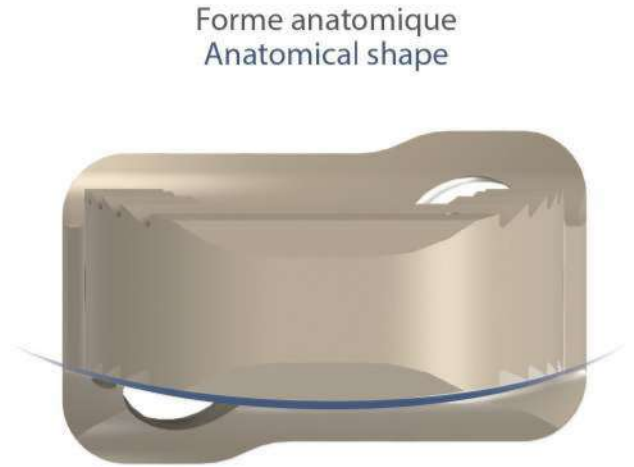
Specifications

Fabriqué en
Made of
PEEK



Epouse les corps vertébraux
Fits the vertebral bodies

Lordosante
Lordotic



Forme anatomique
Anatomical shape

Convexe
Convex

Vis orientées vers l'intérieur
Inward oriented screws



Vis en PEEK
PEEK screws
Radio-Opaque

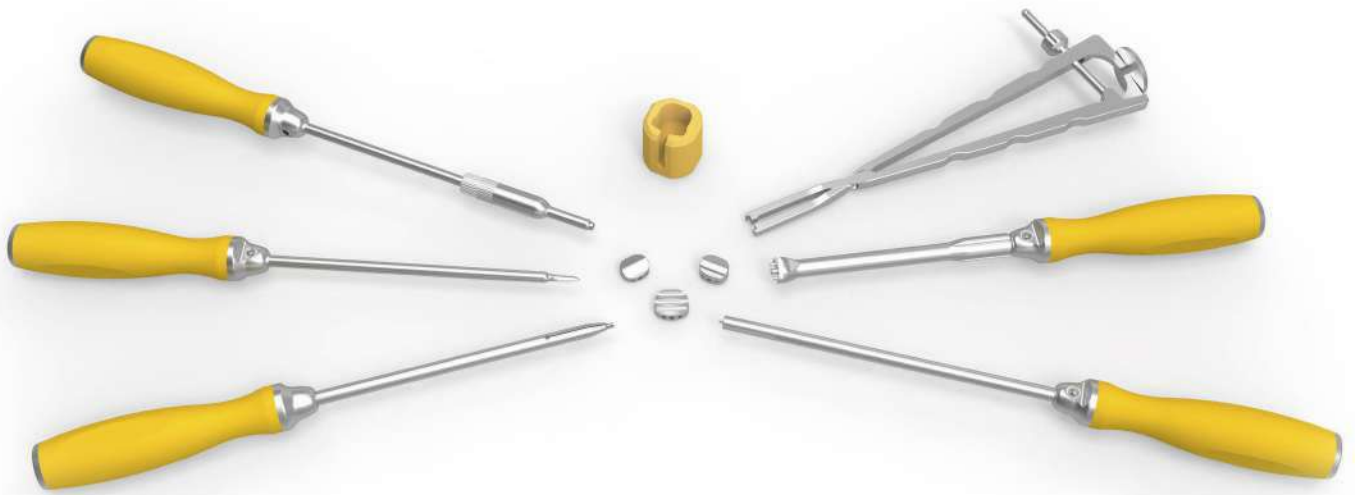
Angles arrondis respectant les éléments anatomiques
Rounded angles respecting the anatomical elements



Large greffe
Wide graft

Profil affleurant
Flush profile

INSTRUMENTS



IMPLANTATION



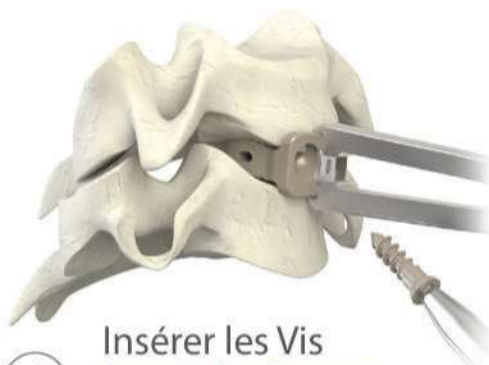
① Choisir la taille
Select the size



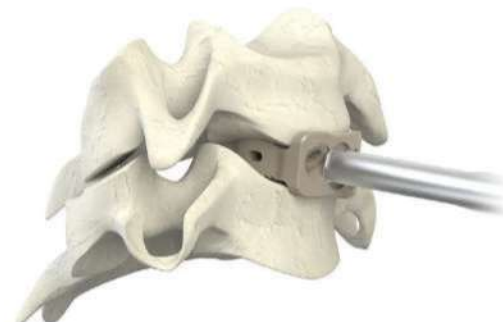
② Insérer la Cage
Insert the Cage



③ Utiliser le Taraud
Use the Tap



④ Insérer les Vis
Insert the Screws



⑤ Tourner le Bouton de Blocage
Turn the Locking Button

DIVA Crown

La Cage Cervicale Bloquée
The Cervical Blocked Cage

Vis / Screws

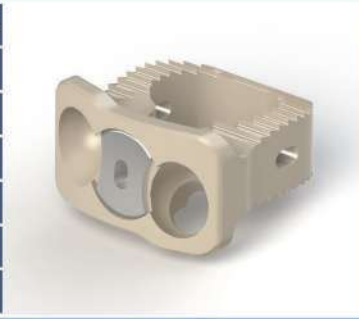
PEEK/ Screws

Titane / Titanium



IMPLANTS Cage / Cage

Standard	Taille / Size	Small	Taille / Size
DCB24	4	DCSB24	4
DCB25	5	DCSB25	5
DCB26	6	DCSB26	6
DCB27	7	DCSB27	7
DCB28	8	DCSB28*	8
DCB29*	9		



DVB10	L.10	DVR10	L.10
DVB12	L.12	DVR12	L.12
DVB14	L.14	DVR14	L.14
DVB16	L.16	DVR16	L.16
DVB18	L.18	DVR18	L.18
DVB20	L.20	DVR20	L.20

INSTRUMENTS

DCR504	Râpe Cervicale <i>Cervical Rasp</i>	DCDC304	Distracteur T.4 <i>Distractor S.4</i>
DIC102	Impacteur Implant d'Essai et Râpe <i>Trial Implants and Rasp Impactor</i>	DCDC305	Distracteur T.5 <i>Distractor S.5</i>
DCIPC133	Impacteur de Cage <i>Cage Impactor</i>	DCDC306	Distracteur T.6 <i>Distractor S.6</i>
DCIC127	Impacteur de Cage Droit <i>Straight Cage Impactor</i>	DCDC307	Distracteur T.7 <i>Distractor S.7</i>
DCPC128	Pointe Carrée <i>Awl</i>	DCDC308	Distracteur T.8 <i>Distractor S.8</i>
DCTA129	Taraud <i>Tap</i>	DCDC309*	Distracteur T.9 <i>Distractor S.9</i>
DCTP130	Tournevis <i>Screwdriver</i>	DCCS404	Distracteur Small T.4 <i>Distractor Small S.4</i>
DCTBB131	Tournevis Bouton de Blocage <i>Locking Button Screwdriver</i>	DCCS405	Distracteur Small T.5 <i>Distractor Small S.5</i>
DCSCB134	Support Cage <i>Cage Holder</i>	DCCS406	Distracteur Small T.6 <i>Distractor Small S.6</i>
CDIVCR-A	Container	DCCS407	Distracteur Small T.7 <i>Distractor Small S.7</i>

* Commande spéciale / *Special order*

CE0499



Tel.: 11 3885-2166 / 3052-1488 - Plantão 24hs: 11 98126-0547

www.radiomed.med.br - atendimento@radiomed.med.br

Alameda Lorena, 1304 - Cj. 1601 a 1607 - Jd. Paulista - São Paulo - SP

@ /radiomed.br

f /radiomed.br

in /radiomed-br